



# 1C:ENTERPRISE

MODERN TREND OF  
DIGITAL TRANSFORMATION

The background is a vibrant yellow with abstract, low-poly geometric shapes in shades of orange and red. These shapes are scattered across the top and bottom corners, creating a dynamic, crystalline effect. The central area is a solid, bright yellow.

**TC:ENTERPRISE**  
IS ALL THE RAGE



Innovative world-class technology platform

The system of applications built on the platform for efficient management and accounting

Over **1,000** mass-market solutions

Over **6,000,000** users in businesses and public institutions

Over **300,000** engineers develop applications in the 1C:Enterprise programming language

The background features a solid orange field on the left, transitioning into a series of overlapping, semi-transparent geometric shapes in shades of orange, yellow, and gold on the right side.

**IC:ENTERPRISE**

WORLD-CLASS  
TECHNOLOGY PLATFORM  
FOR BUILDING  
CORPORATE SYSTEMS

- Scalable, fault-tolerant architecture
- Ideal for large-scale corporate systems
- Cross-platform design, open-source software support:
  - Linux, Windows, Mac OS
  - PostgreSQL, MS SQL Server, IBM DB2, Oracle Database
- Runs on-premise, in the cloud (SaaS, PaaS), or in hybrid mode
- Mobile applications for Android and iOS
- Flexible and customizable to fit specific business processes and a company's proprietary techniques
- Built-in business intelligence tools and 1C:Bus
- Good for creating geographically distributed systems
- Openness, integrates with the absolute majority of software and hardware
- Data access control and management
- Security for confidential information, trade secrets, and personal data

**1C:ENTERPRISE  
PERFORMANCE  
AND SCALABILITY**

**ENSURE EFFICIENT AUTOMATION  
OF LARGE CORPORATIONS  
AND PUBLIC INSTITUTIONS**



**Russian Post.** An automated 1C:Enterprise system for over 150,000 workplaces ensures compliance with a unified methodology for all types of accounting and compliance with IFRS. It provides for real-time management of inventory as well as monitoring and management of business activities. A unified enterprise document management system based on the 1C:Document Management placed the company headquarters, 86 regional branches, and over 1,000 structural divisions into a single unified domain.



**Transmashholding.** The 1C solutions suite is the corporate automation standard, featuring ERP, CPM, WMS, ECM, MES, and ITIL systems. With the implementation of the suite, the company got 60,000 workplaces to manage its operations.



**Moscow City Government.** A SaaS-based unified cloud finance management system serves more than 2,000 city institutions totaling 40,900 users and processes data on more than 500,000 employees.



**The Ministry of Agriculture of Russia.** The ministry uses information systems based on the 1C:Enterprise platform to ensure food security, support the development of agriculture, grant preferential agriculture loans, and monitor the industry. With over 15,000 users, the systems monitor more than 20,000 indicators in over 300,000 units of the agricultural industry.



**TC:ENTERPRISE**  
FOUNDATION FOR  
LARGE-SCALE DIGITAL  
TRANSFORMATION





**Beeline.** With all company retail processes automated with the 1C:Enterprise solutions, customers get serviced through computer workstations and mobile client applications. More than 2,000 retail outlets across Russia with more than 8,000 users from Kaliningrad to Kamchatka utilize 1C:Enterprise solutions in their daily work. The system availability never falls below 99.99%.



**KAMAZ.** Automation of more than 8,000 workplaces at KAMAZ group with the 1C:Enterprise platform allowed to cut costs, streamlined accounting and management processes, and ensured rapid consolidation and analysis of financial statements from all subsidiaries.



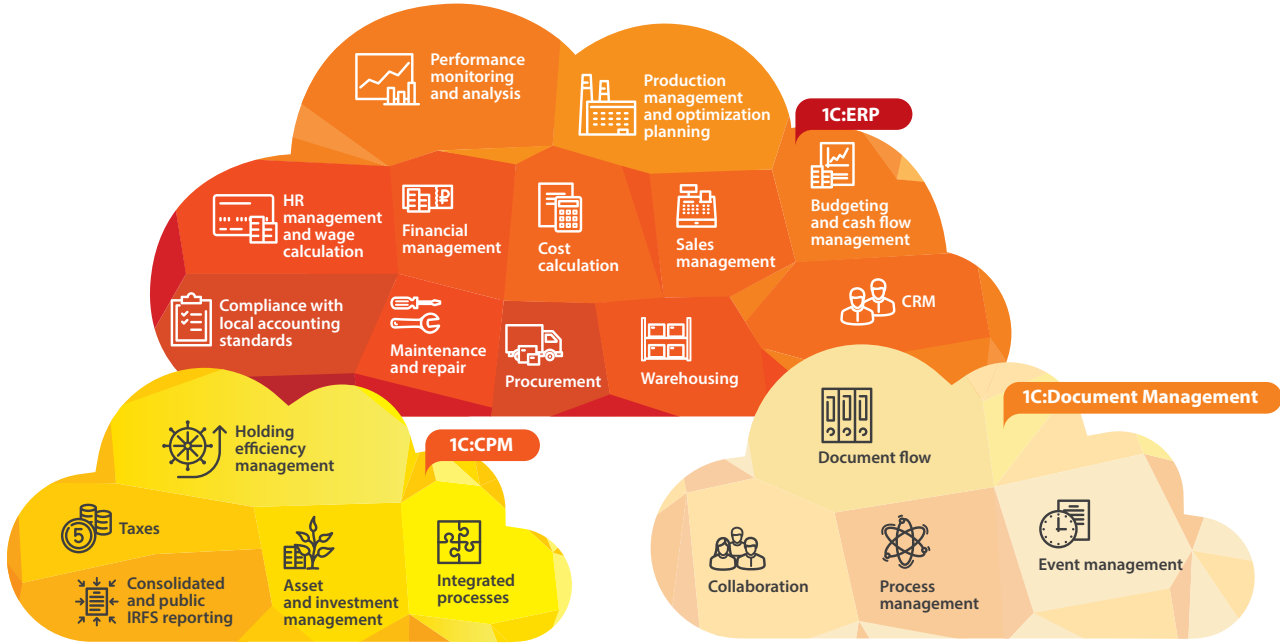
**Sollers.** With over 6,000 automated workplaces, the group cut manufacturing expenses, optimized stock, achieved a more steady supply of components, and reduced production downtime.



**Rosatom. State Atomic Energy Corporation.** The implementation of 1C:ERP Rosatom Unified Corporate System in more than 100 companies within the corporation has led to the creation of over 7,000 automated workplaces. The Corporate Performance Management, a centralized holding management system, linked about 1,500 Rosatom employees and subsidiary groups. All of these have contributed significantly to establishing unified management processes across the atomic industry.



**1C:CORPORATION**  
SOLUTION SUITE FOR  
EFFICIENT MANAGEMENT

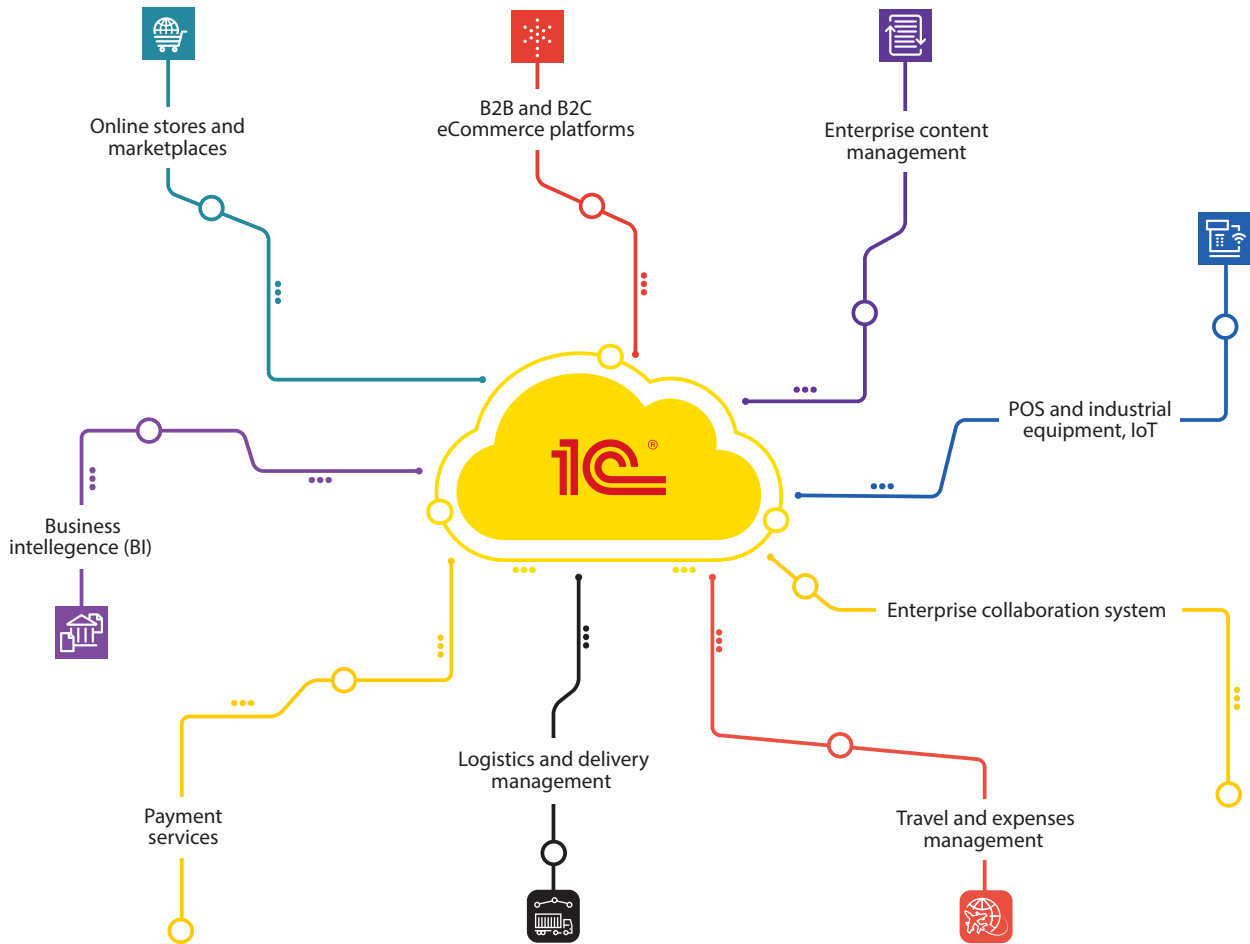


### INDUSTRY- AND BUSINESS-SPECIFIC SOLUTIONS

- |                             |   |                |                      |              |                           |
|-----------------------------|---|----------------|----------------------|--------------|---------------------------|
| 1C:Real Estate and Rental   | 1C:Project Management                   | 1C:Retail      | CRM 1C:CRM           | ITSM 1C:ITIL | 1C:Maintenance and Repair |
| 1C:Satellite Monitoring     | 1C:Management by Objectives and KPI     | 1C:PDM/PLM     | BIM 1C:BIM           | 1C:MDM       | 1C:GIS                    |
| 1C:Environmental Protection | 1C:Occupational Safety and Health (OSH) | 1C:Fire Safety | 1C:Industrial Safety | 1C:WMS       | 1C:TMS                    |



# WIDE-SCALE INTEGRATION





**TC:ENTERPRISE**  
FOR YOUR INDUSTRY



State and municipal administration



Health care and medical industry



Public utilities



Service industry



Culture



Real estate, rent



Education and sciences



Industrial production



Agriculture and forest management



Construction and development



Fuel and energy sector



Trade industry

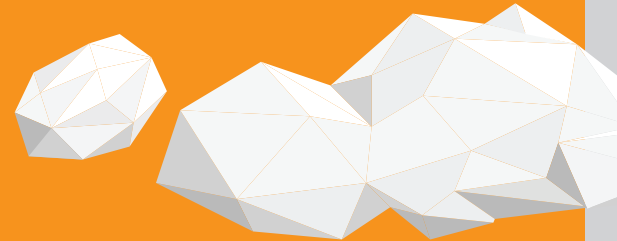


Transport and logistics



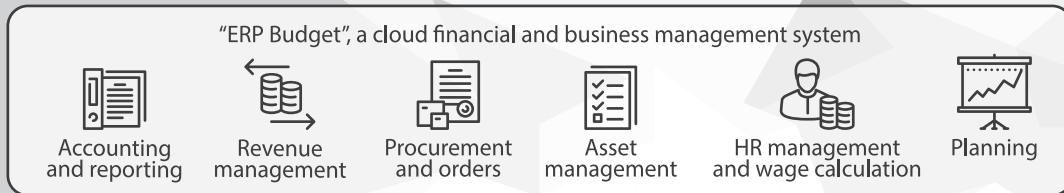
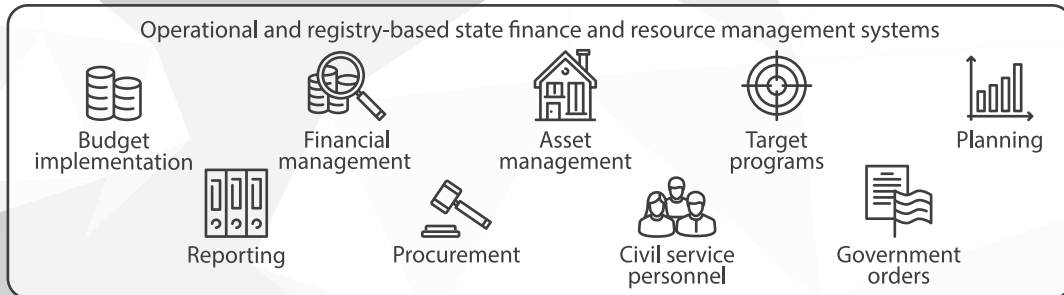
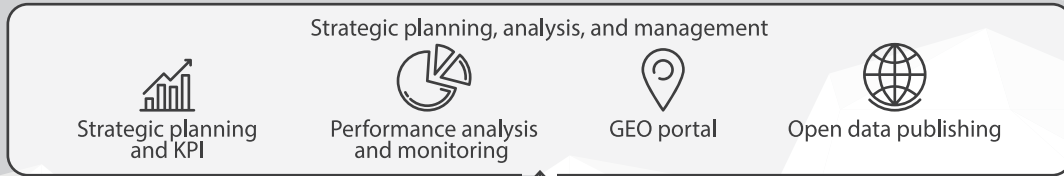
Financial sector

**TC:ENTERPRISE**  
**FOR GOVERNMENT**  
**INSTITUTIONS**





## STATE REGION MANAGEMENT SYSTEM



1C:Medicine



1C:Education




1C:Culture



1C:Public Utilities


The background features a large, irregular orange shape on the left and top, transitioning into a white area on the right. The bottom edge is composed of several overlapping, angular shapes in shades of orange, yellow, and brown, creating a layered, geometric effect.

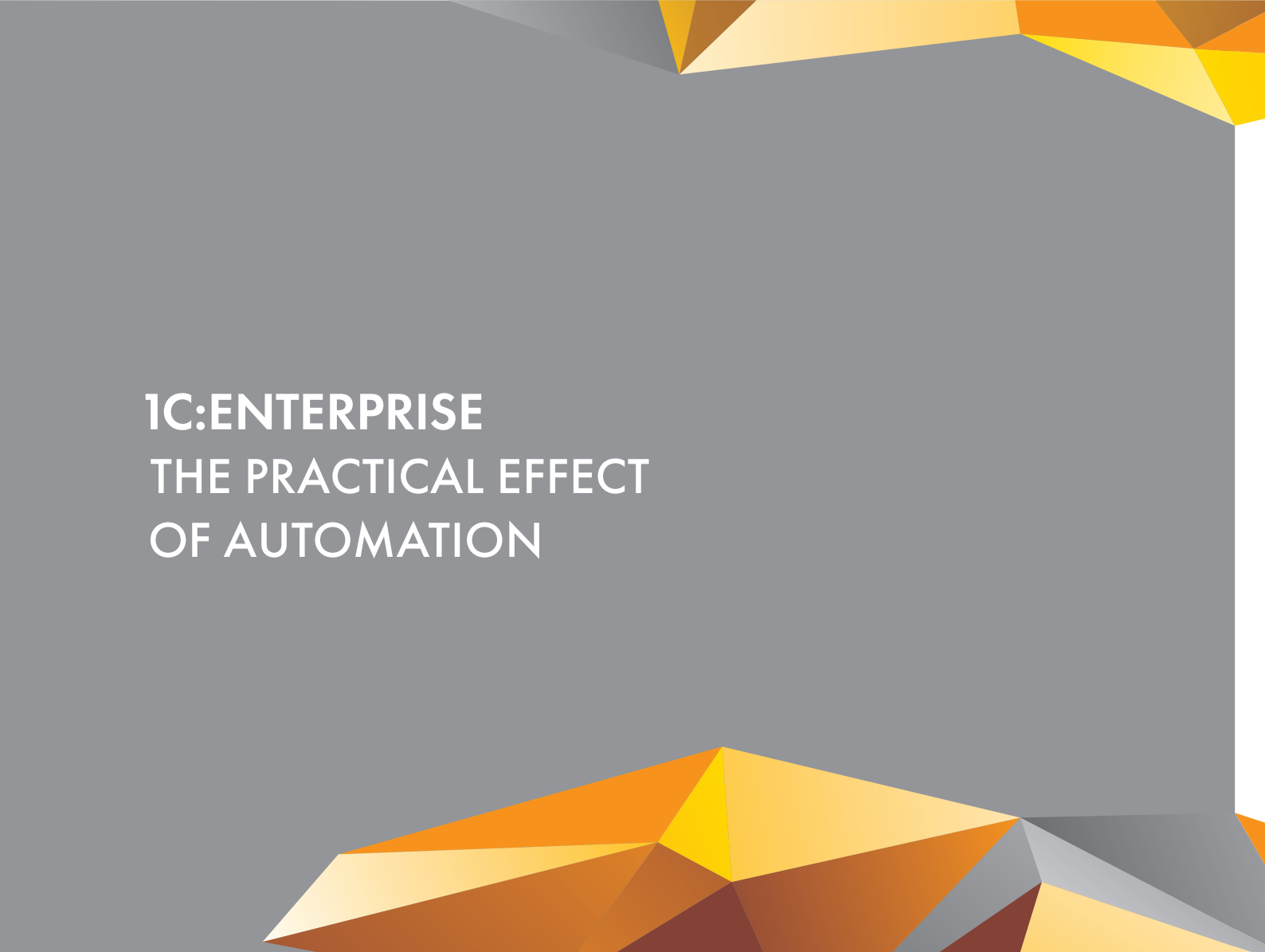
**TC:ENTERPRISE**  
SAVES TIME AND MONEY



Low ownership cost and significant economic benefits due to the increased labor productivity and a rapid return on investment

Compared to world-known competitors:

- **1.5–2 times** faster implementation
  - Requires **much less workforce** to implement
  - **Significantly more affordable** license prices
  - **2 to 3 times lower** project implementation cost vs. competing offers
  - **Several times lower** maintenance costs
- 



**1C:ENTERPRISE**  
THE PRACTICAL EFFECT  
OF AUTOMATION

- **7%** reduction in costs of manufactured products
- **15%** stock optimization
- **18%** growth in production volume
- **19%** increase in labor productivity
- **16%** reduction of accounts receivable days
- **23%** less time for processing sales orders
- **16%** expense reduction
- **8%** profit growth
- **19%** reduction of production defects
- **14%** decrease in equipment downtime

\* Average values according to published performance data for implemented 1C:Enterprise platform-based ERP projects for 200 workstations and up.

The background features a large, bright yellow shape that resembles a stylized arrow or a large 'L' shape pointing towards the top right. This shape is composed of several overlapping geometric polygons. In the bottom-left corner, there is a cluster of smaller, overlapping triangles in various shades of yellow, orange, and red, creating a dynamic, multi-colored geometric pattern.

**TC:ENTERPRISE**  
**IS RIGHT BY YOUR SIDE**

- More than **8,000** certified 1C partners
- Industrial deployment and support in accordance with **ISO 9001 quality standard**
- Corporate support centers
- Corporate solution competency centers
- ERP solution competency centers
- Consulting centers
- Certified training centers
- 1C:Expert certified professionals are ready to handle **up to 200 large projects simultaneously**



**TC:ENTERPRISE**  
**WORLDWIDE**



- 1C:Enterprise is localized into **23 languages**
- The 1C:Enterprise platform was activated in more than **90 countries**
- Products and services developed on the 1C:Enterprise platform can be found in **Asia, the Middle East, Europe, Africa, and the Americas**
- International corporate customers can access the company's expertise through technology support centers
- Online training courses in the English and Spanish languages, and developer certification programs are available



AUTOMATED WITH  
**1C:ENTERPRISE**





1C Company  
21, Seleznevskaya Str., Moscow,  
Phone: +7 (495) 737-92-57  
[www.1c.com](http://www.1c.com)  
[platform@1c.com](mailto:platform@1c.com)

